

Sinker bars offer several uses in cased hole wireline operations. They help increase the weight of wireline equipment such that they can overcome friction in deviated wells. Small perforating guns and production tools have low weights and are susceptible to being displaced out of hole in high flowing wells or high wellhead pressure. The addition of sinker bars can avoid such problems.



Hunting's sinker bars are produced from high quality materials guaranteed to last and withstand the rough treatment usually experienced by this type of equipment.

APPLICATIONS

- Production logging
- Perforating
- Remedial cased hole work

FEATURES

- Option for “over the line” sinker bar
- Lead and tungsten weights protected by strong steel casing

BENEFITS

- Over the line sinker bars do not require any electrical connections
- Saves rig time by conducting wireline services in highly deviated wells
- Available at Hunting's distribution warehouses worldwide

HARDWARE SPECIFICATIONS

O.D. (in)[mm]	Type	Max. Temp.† (°F)[°C]	Max. Pressure (psi)[MPa]	Max. Voltage (VDC)	Max. Current (mA)	Max. Tension (lbf)[kN]	Upper Head Connection	Lower Head Connection
Standard Sinker Bars								
1 [25]	Steel	400 [204]	20,000 [138]	600	2,000	21,000 [93]	13/16"-16 GO Box	13/16"-16 GO Pin
	Tungsten Filled							
1-3/8 [35]	Steel	400 [204]	20,000 [138]	600	2,000	59,000 [262]	1-3/16"-12 GO Box	1-3/16"-12 GO Pin
	Lead Filled							
	Tungsten Filled							
1-7/16 [37]	Steel	400 [204]	20,000 [138]	600	2,000	60,000 [267]	1-3/16"-12 GO Box	1-3/16"-12 GO Pin
	Lead Filled							
	Tungsten Filled							
1-11/16 [43]	Steel	400 [204]	20,000 [138]	600	2,000	63,000 [280]	1-3/16"-12 GO Box	1-3/16"-12 GO Pin
	Lead Filled							
	Tungsten Filled							
2 [51]	Steel	400 [204]	20,000 [138]	600	2,000	63,000 [280]	1-3/16"-12 GO Box	1-3/16"-12 GO Pin
	Lead Filled							
	Tungsten Filled							
2-3/4 [70]	Steel	400 [204]	20,000 [138]	600	2,000	120,000 [534]	*	*
	Tungsten Filled							
3-1/8 [79]	Steel	400 [204]	20,000 [138]	600	2,000	120,000 [534]	*	*
	Tungsten Filled							
Eccentered Weights								
2-3/4 [70]	Steel	400 [204]	20,000 [138]	600	2,000	120,000 [534]	*	*
3-1/8 [79]	Steel	400 [204]	20,000 [138]	600	2,000	120,000 [534]	*	*
Over The Line Sinker Bars								
1-3/8 [35]	Steel	-	-	-	-	42,000 [187]	Standard fishing neck	Cable Head
1-11/16 [43]	Steel	-	-	-	-	42,000 [187]	Standard fishing neck	Cable Head
2 [51]	Steel	-	-	-	-	42,000 [187]	Standard fishing neck	Cable Head
2-3/4 [70]	Steel	-	-	-	-	180,000 [801]	2"-6 Acme Pin	2"-6 Acme Box
	Tungsten Filled	-	-	-	-	180,000 [801]	2"-6 Acme Pin	2"-6 Acme Box
3-1/8 [79]	Steel	-	-	-	-	180,000 [801]	2"-6 Acme Pin	2"-6 Acme Box
	Tungsten Filled	-	-	-	-	180,000 [801]	2"-6 Acme Pin	2"-6 Acme Box

† Viton O-rings need to be used above 325°F (163°C)

* Multiple types of connections are available for the 2-3/4" and 3-1/8" sinker bars and eccentered weights

STANDARD SINKER BAR AND ECCENTERED WEIGHTS ASSEMBLY PART NUMBERS

O.D. (in)[mm]	Type	Contact Kit	3ft (0.91m)		5ft (1.52m)		7ft (2.13m)	
			Assembly Part Number	Weight (lbm)[kg]	Assembly Part Number	Weight (lbm)[kg]	Assembly Part Number	Weight (lbm)[kg]
Standard Sinker Bars								
1 [25]	Steel	3921-002-00#† 3932-002-00#‡	3922-001-003† 3932-001-003‡	6 [3]	3922-001-005† 3932-001-005‡	11 [5]	3922-001-007† 3932-001-007‡	16 [7]
	Tungsten Filled		3923-001-003† 3931-001-003‡	12 [5]	3923-001-005† 3931-001-005‡	20 [9]	3923-001-007† 3931-001-007‡	29 [13]
1-3/8 [35]	Steel	3924-002-00#† 3927-002-00#‡	3926-006-003† 3929-006-003‡	13 [6]	3926-006-005† 3929-006-005‡	22 [10]	3926-006-007† 3929-006-007‡	32 [15]
	Lead Filled		3924-006-003† 3927-006-003‡	16 [7]	3924-006-005† 3927-006-005‡	27 [12]	3924-006-007† 3927-006-007‡	39 [18]
	Tungsten Filled		3925-006-003† 3928-006-003‡	22 [10]	3925-006-005† 3928-006-005‡	38 [17]	3925-006-007† 3928-006-007‡	54 [25]
1-7/16 [37]	Steel	3924-002-00#† 3927-002-00#‡	3926-007-003† 3929-007-003‡	15 [7]	3926-007-005† 3929-007-005‡	25 [11]	3926-007-007† 3929-007-007‡	35 [16]
	Lead Filled		3924-007-003† 3927-007-003‡	17 [8]	3924-007-005† 3927-007-005‡	30 [14]	3924-007-007† 3927-007-007‡	43 [20]
	Tungsten Filled		3925-007-003† 3928-007-003‡	23 [10]	3925-007-005† 3928-007-005‡	40 [18]	3925-007-007† 3928-007-007‡	57 [26]
1-11/16 [43]	Steel	3924-002-00#† 3927-102-00#‡	3926-011-003† 3929-011-003‡	21 [10]	3926-011-005† 3929-011-005‡	35 [16]	3926-011-007† 3929-011-007‡	49 [22]
	Lead Filled		3924-011-003† 3927-011-003‡	25 [11]	3924-011-005† 3927-011-005‡	43 [20]	3924-011-007† 3927-011-007‡	61 [28]
	Tungsten Filled		3925-011-003† 3928-011-003‡	35 [16]	3925-011-005† 3928-011-005‡	60 [27]	3925-011-007† 3928-011-007‡	84 [38]
2 [51]	Steel	3924-002-00#† 3927-102-00#‡	3926-016-003† 3929-016-003‡	30 [14]	3926-016-005† 3929-016-005‡	50 [23]	3926-011-007† 3929-011-007‡	70 [32]
	Lead Filled		3924-016-003† 3927-016-003‡	38 [17]	3924-016-005† 3927-016-005‡	65 [29]	3924-016-007† 3927-016-007‡	92 [42]
	Tungsten Filled		3925-016-003† 3928-016-003‡	52 [24]	3925-016-005† 3928-016-005‡	88 [40]	3925-016-007† 3928-016-007‡	124 [52]
2-3/4 [70]	Steel	3890-102-00#	3885-100-003	39 [18]	3885-100-005	75 [34]	3885-100-007	112 [51]
	Tungsten Filled		3885-300-003	53 [24]	3885-300-005	105 [48]	3885-300-007	158 [72]
3-1/8 [79]	Steel	3890-102-00#	3890-100-003	53 [24]	3890-100-005	101 [46]	3890-100-007	149 [68]
	Tungsten Filled		3890-300-003	66 [30]	3890-300-005	130 [59]	3890-300-007	194 [88]
Eccentered Weights								
2-3/4 [70]	Steel	4126-312-302	-	-	4126-275-300-5	55 [25]	-	-
3-1/8 [79]	Steel	4126-312-302	-	-	4126-312-300-5	71 [32]	-	-



Spring contact



Banana plug

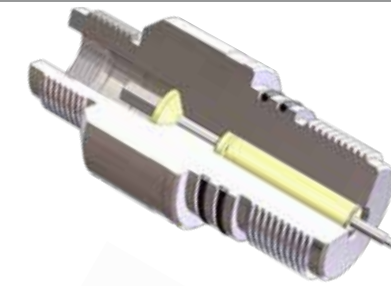
Use "3" for 3ft bar; "5" for 5ft bar; "7" for 7ft bar; "0" for contact kit without the contact rod

† Spring contact on lower head connection

‡ Banana plug contact on lower head connection

ADAPTERS FOR STANDARD AND ECCENTERED SINKER BARS

O.D. (in)[mm]	Assembly Part Number	Contact Kit	Upper Contact Head Assembly	Weight (lbm)[kg]
2-3/4 [70]	3885-000-080	0318-000-022	1-3/16"-12 GO Box with 2"-6 Acme fishing neck thread	7 [3]
	3885-000-150	3885-000-152	1-5/8"-6 Acme Pin	8 [4]
	3885-000-070	3890-000-222	2-3/4" O.D. CCL Assembly	8 [4]
	3885-000-110	3890-000-112	2-3/4" O.D. GO Quick-Change Assembly	11 [5]
	3885-000-140	3890-000-142	2-3/4" O.D. SIE Quick-Change Assembly	10 [5]
	3885-000-020	3885-000-022	Tandem connector sub assembly	10 [5]
	3885-000-120	3890-000-352	Lock collar tandem connector sub assembly	12 [5]
3-1/8 [79]	3890-000-170	0318-000-022	1-3/16"-12 GO Box with 2"-6 Acme fishing neck thread	8 [4]
	3890-000-240	3890-000-242	1-5/8"-6 Acme Pin	9 [4]
	3890-000-340	3890-000-222	2-3/4" O.D. CCL Assembly	9 [4]
	3890-000-110	3890-000-112	3-1/8" O.D. GO Quick-Change Assembly	13 [6]
	3890-000-220	3890-000-222	3-1/8" O.D. CCL Assembly	10 [5]
	3890-000-140	3890-000-142	3-1/8" O.D. SIE Quick-Change Assembly	11 [5]
	3890-000-150	3933-000-002	Tandem connector sub assembly	9 [4]
	3890-000-350	3890-000-352	Lock collar tandem connector sub assembly	12 [5]
Lower Contact Head Assembly				
2-3/4 [70]	3885-000-050	0318-000-022	1-5/8"-6 Acme Box	9 [4]
	3885-000-060	3885-000-062	2-3/4" O.D. CCL Assembly	7 [3]
3-1/8 [79]	3890-000-120	3890-000-122	1-5/8"-6 Acme Box	11 [5]
	3890-000-330	3885-000-062	2-3/4" O.D. CCL Assembly	9 [4]
	3890-000-130	5401-000-032	3-1/8" O.D. CCL Assembly	7 [3]



GO Box with fishing neck thread adapter



Acme pin adapter



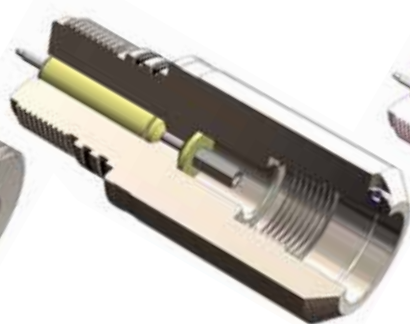
CCL assembly adapter (upper head)



GO Quick-Change assembly adapter



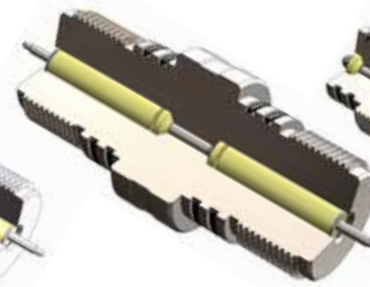
CCL assembly adapter (lower head)



Acme box adapter



Lock collar tandem connector



Tandem connector



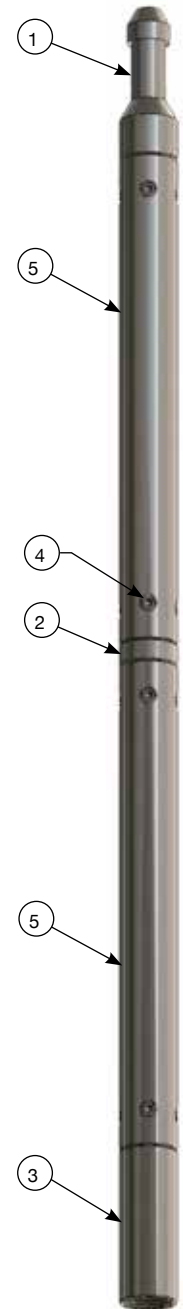
SIE Quick-Change assembly adapter

OVER THE LINE SINKER BAR PART NUMBERS

This series of over the line sinker bars features a bolt together assembly. As many weight bars can be bolted together as necessary.

The fishing neck utilizes a standard slickline profile. The lower sub allows a cone type II rope socket to be built into it and screws directly into any of Hunting's 1-7/16" (37mm) and 1-11/16" (43mm) logging cable head bodies.

O.D. (in)[mm]	Line Size (in)[mm]	1	2	3	4	
		Fishing Neck	Tandem Adapter	Lower Sub Cone Style II	Connector screw	
1-3/8 [35]	7/32 [6]	1049-001-218	1049-002-218	1049-008-218	0320-000-019	
	0.288 [7]	1049-001-288	1049-002-288	1049-008-288		
	5/16 [8]	1049-001-312	1049-002-312	1049-008-312		
	15/32 [12]	1049-001-468	1049-002-468	1049-008-468		
	0.474 [12]	1049-001-474	1049-002-474	1049-008-474		
1-11/16 [43]	7/32 [6]	1050-001-218	1050-002-218	1050-008-218		
	0.288 [7]	1050-001-288	1050-002-288	1050-008-288		
	5/16 [8]	1050-001-312	1050-002-312	1050-008-312		
	15/32 [12]	1050-001-468	1050-002-468	1050-008-468		
	0.474 [12]	1050-001-474	1050-002-474	1050-008-474		
2 [51]	7/32 [6]	1051-001-218	1051-002-218	1051-008-218		0321-000-019
	0.288 [7]	1051-001-288	1051-002-288	1051-008-288		
	5/16 [8]	1051-001-312	1051-002-312	1051-008-312		
	15/32 [12]	1051-001-468	1051-002-468	1051-008-468		
	0.474 [12]	1051-001-474	1051-002-474	1051-008-474		



O.D. (in)[mm]	Type	5							
		Body							
		4ft (1.22m)	Weight (lb)[kg]	5ft (1.52m)	Weight (lb)[kg]	6ft (1.83m)	Weight (lb)[kg]	7ft (2.13m)	Weight (lb)[kg]
1-3/8 [35]	Steel	1049-375-S04†	17 [8]	1049-375-S05†	22 [10]	1049-375-S06†	27 [12]	1049-375-S07†	31 [14]
	Lead Filled	1052-375-L04† 1052-500-L04‡	21 [10]	1052-375-L05† 1052-500-L05‡	27 [12]	1052-375-L06† 1052-500-L06‡	32 [15]	1052-375-L07† 1052-500-L07‡	39 [18]
	Tungsten Filled	1055-375-T04† 1055-500-T04‡	28 [13]	1055-375-T05† 1055-500-T05‡	35 [16]	1055-375-T06† 1055-500-T06‡	43 [20]	1055-375-T07† 1055-500-T07‡	50 [23]
1-11/16 [43]	Steel	1050-437-S04§	27 [12]	1050-437-S05§	34 [15]	1050-437-S06§	41 [19]	1050-437-S07§	48 [22]
	Lead Filled	1053-375-L04† 1053-500-L04‡	33 [15]	1053-375-L05† 1053-500-L05‡	42 [19]	1053-375-L06† 1053-500-L06‡	51 [23]	1053-375-L07† 1053-500-L07‡	60 [27]
	Tungsten Filled	1056-375-T04† 1056-500-T04‡	44 [20]	1056-375-T05† 1056-500-T05‡	56 [25]	1056-375-T06† 1056-500-T06‡	68 [31]	1056-375-T07† 1056-500-T07‡	80 [36]
2 [51]	Steel	1051-500-S04‡	38 [17]	1051-500-S05‡	48 [22]	1051-500-S06‡	58 [26]	1051-500-S07‡	68 [31]
	Lead Filled	1054-375-L04† 1054-500-L04‡	48 [22]	1054-375-L05† 1054-500-L05‡	61 [28]	1054-375-L06† 1054-500-L06‡	75 [34]	1054-375-L07† 1054-500-L07‡	88 [40]
	Tungsten Filled	1057-375-T04† 1057-500-T04‡	65 [29]	1057-375-T05† 1057-500-T05‡	83 [38]	1057-375-T06† 1057-500-T06‡	101 [46]	1057-375-T07† 1057-500-T07‡	119 [54]

† Diameter of cable hole = 3/8" (10mm)
 ‡ Diameter of cable hole = 1/2" (13mm)
 § Diameter of cable hole = 7/16" (11mm)

P:\Marketing-Catalog\2014_002\20150016

OVER THE LINE SINKER BAR PART NUMBERS

This large diameter series of over the line sinker bars features a screw together assembly. As many weight bars can be screwed together as necessary.

They utilize a 2" fishing neck which is attached to the top of the weight bar. A complete Hunting 1-7/16" (37mm) electrical cable head assembly fits inside the lower end of the weight bar and secured with an adapter.

O.D. (in)[mm]	Type	1 Fishing Neck	2 Body						3	
			3ft (0.91m)		5ft (1.52m)		7ft (2.13m)		Adapter	Lower Head Connection
			Part Number	Weight (lb)[kg]	Part Number	Weight (lb)[kg]	Part Number	Weight (lb)[kg]		
2-3/4 [70]	Steel	3884-275-001-0LS†	3884-275-103	51 [23]	3884-275-105	87 [39]	3884-275-107	124 [56]	0268-000-010	2-3/4" O.D. CCL Assembly
	Tungsten Filled		3884-275-203	71 [32]	3884-275-205	144 [65]	3884-275-207	216 [98]		
3-1/8 [79]	Steel	3884-275-001-0LS†	3884-312-103	67 [30]	3884-312-105	116 [53]	3884-312-107	164 [74]	0257-200-003	3-1/8" O.D. CCL Assembly
	Tungsten Filled		3884-312-203	88 [40]	3884-312-205	172 [78]	3884-312-207	256 [116]		

† OLS = Electric Wireline Diameter
 Example: 218 = 7/32" (5.5mm)
 288 = .288" (7.3mm)
 312 = 5/16" (7.9mm)
 468 = 15/32" (11.9mm)

