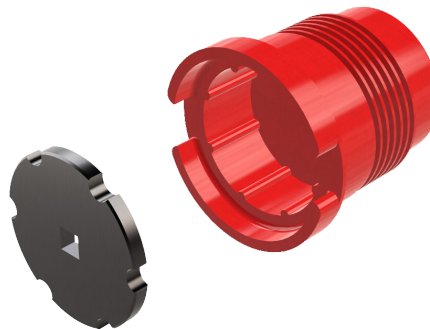


# Thread Protectors and Support Plates



These plastic box thread protectors are suitable for storing and transporting loaded or unloaded gun carriers. They provide an O-Ring seal keeping moisture out and protect the gun carrier threads from becoming damaged during normal every day handling. Thread protector wrenches are available for 2-3/4" - 2-7/8", 3-1/8" and 3-3/8" gun carries to enable quick removal. Each wrench is compatible with a 3/8" drive.

Gun Size (in)[mm]	Gun Box Protector	O-Ring†	Wrench
1-3/8 [35]	0227-000-220P	0111-120-090	-
1-9/16 [40]	0220-000-220P	0111-215-090	-
2 [51]	0222-000-220P	0111-221-090	-
2-1/2 [64]	0228-000-220P	0111-225-090	-
2-3/4 [70] 2-7/8 [73]	0362-000-320	0111-227-090	0362-000-425
3-1/8 [79]	0363-000-320	0111-230-090	0363-000-425
3-3/8 [86]	0365-000-320	0111-231-090	0365-000-425
4 [102] Scalloped 4 [102] Economical	0400-000-320 0640-000-320	0111-236-090	-
4-1/2 [114] 4-5/8 [117]	0414-000-320	0111-342-090	-
7 [178]	0338-000-320	0111-360-090	-



† Lower grade O-Rings can be used

Steel protectors with handles provide an easier way of handling loaded guns especially when booster-to-booster transfers and tandems are already installed on each end of the carrier. O-Rings provide a moisture seal while a melt plug provides pressure relief should a loaded gun be involved in a blaze. They are not rated for rigging up/down operations. TCP Lift Subs need to be utilized for this purpose.

Gun Size (in)[mm]	Gun Box Protector	Gun Pin Protector	Melt Plug	O-Ring†	Booster-to-Booster Gun Connection Compatibility
1-3/8 [35]	0227-000-220	0227-000-230	8801-00P-28	0111-120-090	1-3/8" Top Sub and Tandem Adapter
1-9/16 [40]	0220-000-220	0220-000-230	8801-00P-28	0111-215-090	1-9/16" Tandem Adapter 1-9/16", 2" and 2-1/2" Top Sub
2 [51]	0222-000-220	0222-000-230	8801-00P-28	0111-221-090	2" Tandem Adapter
2-1/2 [64]	0228-000-220	0228-000-230	8801-00P-28	0111-225-090	2-1/2" Tandem Adapter 2-3/4" and 2-7/8" Top Sub
2-3/4 [70] 2-7/8 [73]	0462-000-220	0462-000-230	8801-00P-68V	0111-227-090	2-3/4" and 2-7/8" Tandem Adapter
3-1/8 [79]	0402-000-220	0402-000-230	8801-00P-68V	0111-230-090	3-1/8" Tandem Adapter 3-1/8" to 7" Top Sub
3-3/8 [86]	0403-000-220	0403-000-230	8801-00P-68V	0111-231-090	3-3/8" Tandem Adapter
4 [102] Scalloped 4 [102] Economical	0404-000-220 0640-000-120	0404-000-230 0640-000-230	8801-00P-68V	0111-236-090	4" Tandem Adapter
4-1/2 [114] 4-5/8 [117]	0414-000-220	0414-000-230	8801-00P-68V	0111-342-090	4-1/2" Tandem Adapter 4-5/8" Tandem Adapter
7 [178]	0407-000-220	0407-000-230	8801-00P-68V	0111-360-090	7" Tandem Adapter



† Lower grade O-Rings can be used

Support plates are used in conjunction with Rotary Table Slips and function as a secondary safety device in the event of slip failure. They are rated to hold a specified gun weight as listed in the following table.

Gun Size (in)[mm]	Support Plate Part Number	Max. Gun Weight (lb)[kg]
1-9/16 [40]	0520-000-090	31,000 [14,061]
2 [51]	0522-000-090	33,200 [15,059]
2-1/2 [64]	0528-000-090	37,200 [16,874]
2-3/4 [70] 2-7/8 [73]	0562-000-090	42,000 [19,051]
3-1/8 [79] 3-3/8 [86]	0503-000-090	62,600 [28,395]
4 [102]	0504-000-090	68,000 [30,844]
4-1/2 [114] 4-5/8 [117]	0514-000-090	71,200 [32,296]
5 [127]	0505-000-090	93,000 [42,184]
7 [178]	0507-000-090	139,000 [63,049]

