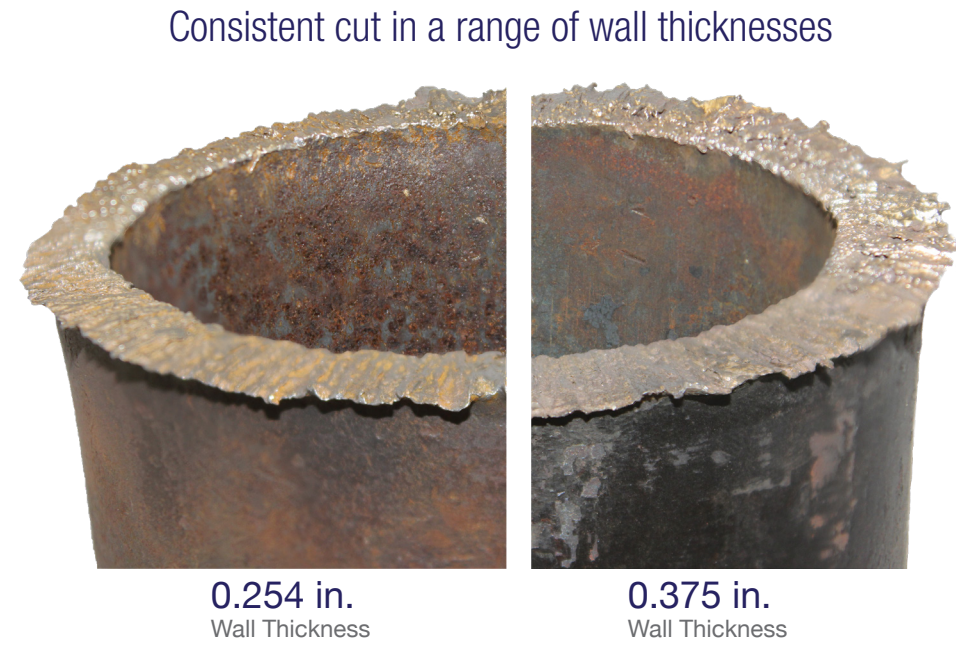
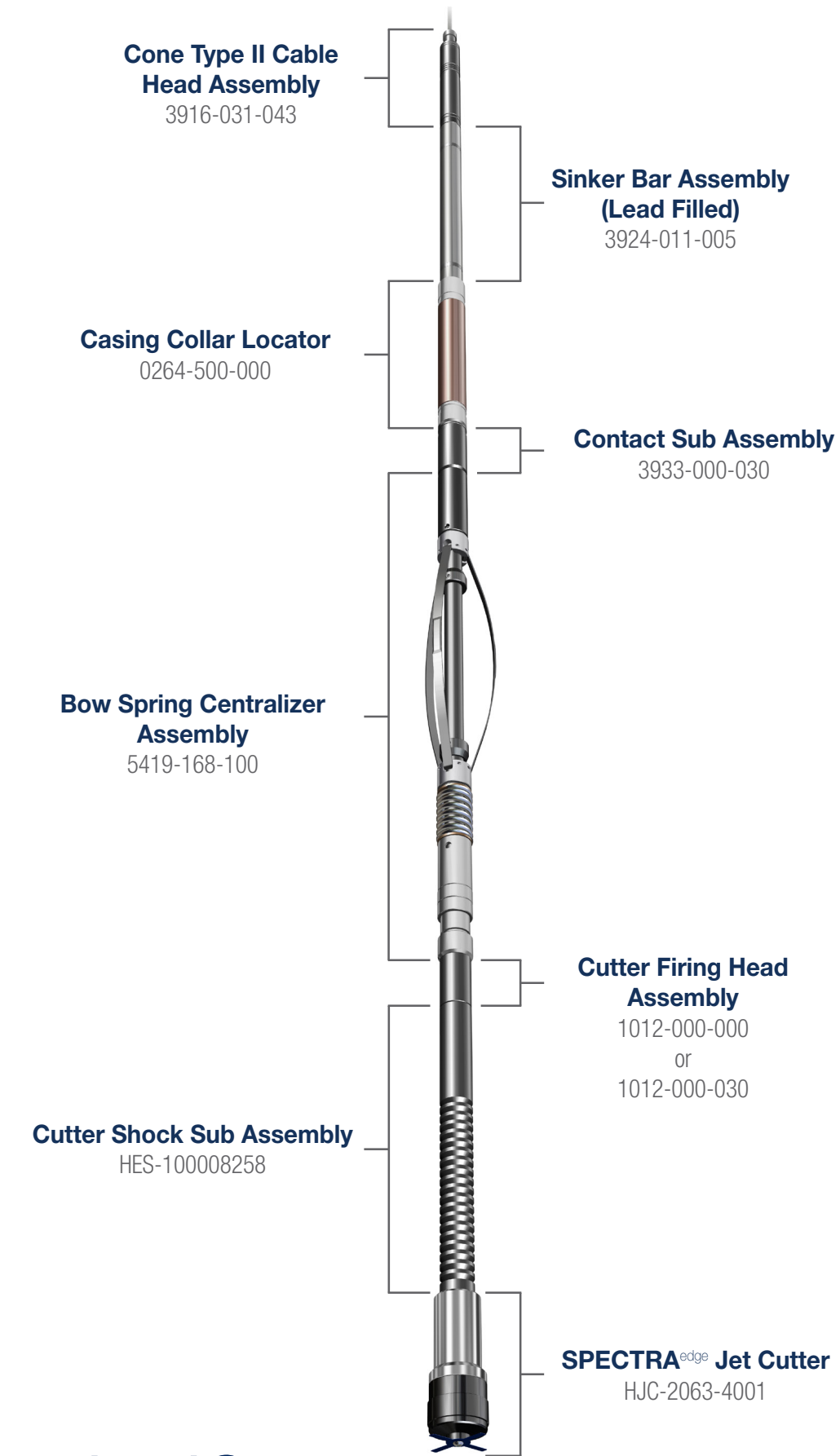


Hunting Provides the Complete Toolstring



SCP-2063T002	
Pipe Specification	2-7/8", L-80, 6.4 lb
Pressure (psi)[Mpa]	13,000 [89.6]



SCP-C3500T302	
Pipe Specification	4-1/2", L-80, 12.96 lb
Pressure (psi)[Mpa]	7,500 [56.88]



SCP-1375T002	
Pipe Specification	2", 0.205" Wall
Pressure (psi)[Mpa]	9,000 [62.05]



Titan Division | Energetics

SPECTRA[®] Jet Cutters



Contact Information			
Sales sales.titan@hunting-intl.com	Perforating Pampa, TX USA Calgary, AB CAN	Instruments Pampa, TX USA Wichita Falls, TX USA Houston, TX USA	Energetics Millford, TX USA
Technical Support support.titan@hunting-intl.com			Distribution Hunting's distribution centers are strategically placed globally. For more information, visit us at: www.hunting-intl.com/titan

© 2019 Hunting. All rights reserved. SPECTRA and SPECTRA[®] are registered trademarks of Hunting.

SPECTRA² Jet Cutters

SPECTRA² Jet Cutters

Assembly Part Number	SCP-1680T002	SCP-2063T002	SCP-2500T002
Specifications			
Cutter O.D. (in.) [mm]	1-11/16 [43]	2-1/16 [52]	2-1/2 [64]
Pipe O.D. (in.) [mm]	2-3/8 [60]	2-7/8 [68]	3-1/2 [89]
Pipe I.D. (in.) [mm]	2.00-1.87 [51-47]	2.44-2.32 [62-59]	2.99-2.75 [76-70]
Weight (lb/ft) [kg/m]	4.70-5.80 [6.99-8.63]	6.50-7.90 [9.71-11.8]	9.30-12.95 [13.80-19.27]
Wall Thickness (in.) [mm]	0.190-0.254 [4.83-6.45]	0.217-0.276 [5.51-7.01]	0.254-0.375 [6.45-9.52]
Environment			
Maximum 1 Hour Temperature Rating (°F)[°C]	400 [204]	400 [204]	400 [204]
Maximum Pressure (psi) [Mpa]	18,000 [124]	18,000 [124]	18,000 [124]
Hazard Class	1.4D	1.4D	1.4D
Mechanical			
Explosive Weight	13.6 g	16.6 g	28.6 g
Explosive Type	HMX	HMX	HMX
Thread Connection	1-3/16" GO Box	1-3/16" GO Box	1-3/16" GO Box

Casing Cutters

SCP-C3500T302	HJC-3500-3001	SCP-C4250T302	HJC-4250-3001	HJC-5800-3001
Specifications				
3-1/2 [89]	3-1/2 [89]	4-1/4 [108]	4-1/4 [108]	5.80 [147]
4-1/2 [114]	4-1/2 [114]	5-1/2 [140]	5-1/2 [140]	7 [178]
4.09-3.83 [104-97]	4.09-3.83 [104-97]	4.89-4.67 [124-119]	4.89-4.67 [124-119]	6.37-6.18 [162-157]
9.50-15.1 [14.1-22.5]	9.50-15.1 [14.1-22.5]	17.0-23.0 [25.3-34.2]	17.0-23.0 [25.3-34.2]	23.0-29.0 [34.2-43.2]
0.205-0.337 [5.21-8.56]	0.205-0.337 [5.21-8.56]	0.304-0.415 [7.72-10.54]	0.304-0.415 [7.72-10.54]	0.315-0.410 [8.00-10.41]
Environment				
400 [204]	300 [149]	400 [204]	300 [149]	300 [149]
7,500 [52]	7,500 [52]	7,500 [52]	7,500 [52]	7,500 [52]
1.4D	1.4D	1.4D	1.4D	1.4D
Mechanical				
55.8 g	55.8 g	90.9 g	90.9 g	150.6 g
HMX	RDX	HMX	RDX	RDX
1-3/16" GO Box	1-3/16" GO Box	1-3/16" GO Box	1-3/16" GO Box	1-3/16" GO Box



SPECTRA² Jet Cutter

SPECTRA² Jet Cutters are for use in:

- Vertical or horizontal pipe recovery
- Tapered or straight coiled tubing and stick pipe
- Plug and abandonment
- All wellbore environments
- Deepwater services

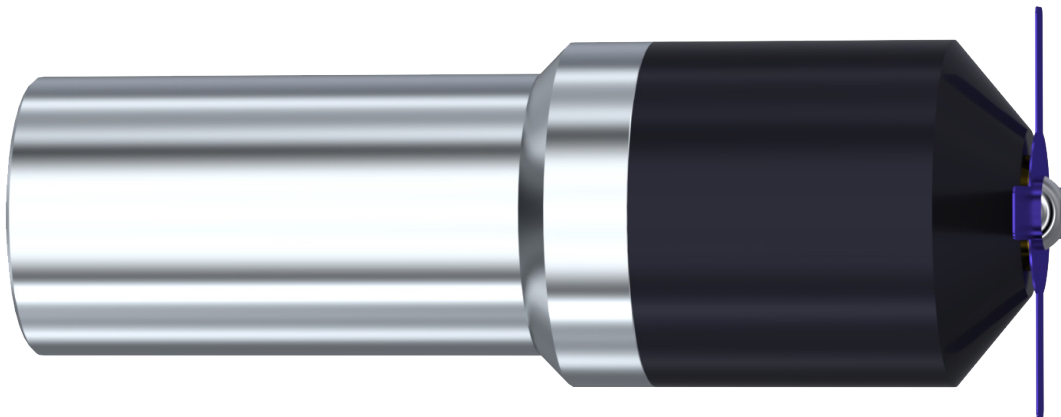
SPECTRA² Low-Pressure Tubing Cutters

Assembly Part Number	SCP-1680T002LP	SCP-2063T002LP
Specifications		
Cutter O.D. (in.) [mm]	1-11/16 [43]	2-1/16 [52]
Pipe O.D. (in.) [mm]	2-3/8 [60]	2-7/8 [68]
Pipe I.D. (in.) [mm]	2.00 [51]	2.44 [62]
Weight (lb/ft) [kg/m]	4.70 [6.99]	6.50 [9.71]
Wall Thickness (in.) [mm]	0.190 [4.83]	0.217 [5.51]
Environment		
Max. 1 Hour Temperature Rating (°F) [°C]	400 [204]	400 [204]
Max. Pressure (psi) [Mpa]	7,500 [52]	7,500 [52]
Hazard Class	1.4D	1.4D
Mechanical		
Explosive Weight	7.2 g	12.6 g
Explosive Type	HMX	HMX
Thread Connection	1-3/16" GO Box	1-3/16" GO Box

Coiled Tubing Jet Cutters

SCP-1188T002	SCP-1375T002
Specifications	
1.19 [30]	1.38 [35]
1.75 [44]	2.00 [51]
1.53-1.40 [39-36]	1.78-1.59 [45-40]
1.92-2.95 [2.86-4.39]	2.21-3.92 [3.29-5.83]
0.109-0.175 [2.77-4.45]	0.109-0.204 [2.77-5.18]
Environment	
400 [204]	400 [204]
12,000 [83]	18,000 [124]
1.4D	1.4D
Mechanical	
5.7 g	6.8 g
HMX	HMX
1/2" - 20 UNF Box	1/2" - 20 UNF Box

Contact Us:
Sales: sales.titan@hunting-intl.com
Support: support.titan@hunting-intl.com
www.hunting-intl.com/titan



SPECTRA^{edge} Jet Cutters

Hunting's SPECTRA^{edge} Jet Cutters were designed specifically for the mid-pressure (12,000 psi) Plug & Abandonment market.

SPECTRA^{edge} Jet Cutters

Assembly Part Number	HJC-1680-4001	HJC-1680-3001	HJC-2063-4001	HJC-2063-3001	HJC-2500-4001	HJC-2500-3001
Specifications						
Cutter O.D. (in.) [mm]	1-11/16 [43]	1-11/16 [43]	2-1/16 [52]	2-1/16 [52]	2-1/2 [64]	2-1/2 [64]
Pipe O.D. (in.) [mm]	2-3/8 [60]	2-3/8 [60]	2-7/8 [68]	2-7/8 [68]	3-1/2 [89]	3-1/2 [89]
Pipe I.D. (in.) [mm]	2.00-1.87 [51-47]	2.00-1.87 [51-47]	2.44-2.32 [62-59]	2.44-2.32 [62-59]	2.99-2.75 [76-70]	2.99-2.75 [76-70]
Weight (lb/ft) [kg/m]	4.70-5.80 [6.99-8.63]	4.70-5.80 [6.99-8.63]	6.50-7.90 [9.71-11.8]	6.50-7.90 [9.71-11.8]	9.30-12.95 [13.80-19.27]	9.30-12.95 [13.80-19.27]
Wall Thickness (in.) [mm]	0.190-0.254 [4.83-6.45]	0.190-0.254 [4.83-6.45]	0.217-0.276 [5.51-7.01]	0.217-0.276 [5.51-7.01]	0.254-0.375 [6.45-9.52]	0.254-0.375 [6.45-9.52]
Type	Tubing	Tubing	Tubing	Tubing	Tubing	Tubing
Environment						
Max. 1 Hour Temperature Rating (°F) [°C]	400 [204]	300 [149]	400 [204]	300 [149]	400 [204]	300 [149]
Max. Pressure (psi) [Mpa]	12,000 [83]	12,000 [83]	12,000 [83]	12,000 [83]	12,000 [83]	12,000 [83]
Hazard Class	1.4D	1.4D	1.4D	1.4D	1.4D	1.4D
Mechanical						
Explosive Weight	13.6 g	13.6 g	16.6 g	16.6 g	28.6 g	28.6 g
Explosive Type	HMX	RDX	HMX	RDX	HMX	RDX
Thread Connection	1-3/16" GO Box	1-3/16" GO Box	1-3/16" GO Box	1-3/16" GO Box	1-3/16" GO Box	1-3/16" GO Box