

## Hunting Release Tool - Electronic

Titan Division | Instruments



The Hunting Release Tool - Electronic (HRT-E) is used with electric wireline logging and perforating toolstrings as a failsafe for stuck equipment.

The Hunting Release Tool - Electronic model (HRT-E) reliably disconnects the downhole tool assembly from the electric wireline in the event the assembly becomes stuck in the wellbore. This allows for complete retrieval of electric wireline, so the fishing operation can use a conventional overshot to retrieve the stuck tool assembly. The non-explosive HRT-E can be used with both wireline logging and perforating toolstrings as a failsafe for stuck equipment.

This non-explosive release tool separates electronically, leaving behind a fishing neck to assist with retrieval.



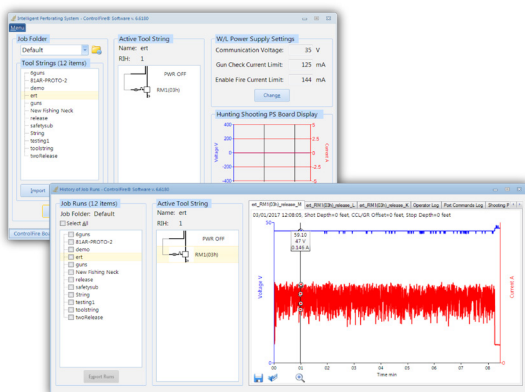
*HRT-E is shown after release.*

### Features

- Fully electronic, no explosives
- Addressable with real-time monitoring
- For logging and perforating operations
- EBFire and ControlFire compatible
- Standard fishing neck left behind

### Benefits

- Avoids bringing back a live explosive to surface after each run.
- Avoids parting of wireline during overpull
- Prevents accidental release with multiple fail safe systems
- Reusable with minimal maintenance
- Functions after perforating guns are fired
- No Voltage Sensing Switch (VSS) required



HRT-E has a Unique Address Identifiable by Hunting's ControlFire® Software

## Specifications

Part	HRT-E	Shock Sub*
Part Number	81AR-27550M0125-06-71	3101-275-100
<b>Mechanical</b>		
Diameter (in) [mm]	2-3/4 [70]	2-3/4 [70]
Make-Up Length (in) [cm]	54 [137.16]	25.39 [645]
Weight (lb) [kg]	63 [28.58]	40 [18]
Top Connection (Pin)	1-5/8 in -6 ACME	1-5/8 in -6 ACME
Bottom Connection (Box)	1-5/8 in -6 ACME	1-5/8 in -6 ACME
Maximum Tension (lbf) [kN]	20,000 [88.96]	120,000 [533]
<b>Environmental</b>		
Temperature Rating (°F)[°C]	350 [176.67]	500 [260]
Max Rate of Heat/Cool Range Degree/Minute (°F)[°C]	5.4 [-14.78]	-
Pressure Rating (psi) [MPa]	18,000 [124]	20,000 [138]
Vibration (3 axis) Operational Sweep Frequency (50-1000Hz)*	30 G RMS	-
Shock (Z Axis)	1000 g, 1mS	-
Shock (X-Y Axis)	1000 g, 1mS	-
<b>Electrical</b>		
Firing Capability	Pos./Neg. EBFire®, ControlFire®	Pos./Neg. EBFire®, ControlFire®
Positive Voltage Logging	+75 to +450 VDC	+/- 750 VDC
Negative Voltage Logging	Unavailable	+/- 750 VDC
Positive Voltage Perforating	+75 to +450 VDC	+/- 750 VDC
Negative Voltage Perforating	0 to -450 VDC	+/- 750 VDC
Max Positive Logging Current	400 mAdc	2,000 mA
Max Negative Perforating Current	1.5 Adc for 5 seconds 1 ADC for 12 seconds	2,000 mA
Negative Releasing	200 mAdc	2,000 mA
Telemetry Data Rate	ControlFire®	-
Cable Type	Mono or Multi-Conductor	Mono or Multi-Conductor
Transmitted Data	ControlFire® Telemetry	-

\*HRT-E Requires a shock sub for perforating and setting tool operations

## Efficient Assembly and Redress



For more information contact your Titan Division sales representative today!

Or visit us at: [www.hunting-intl.com/titan](http://www.hunting-intl.com/titan)

## ControlFire Components

Part Number	Description
9002-013-810-1*	ControlFire® Shooting Power Supply

\* Other ControlFire panel options available.



## Contact Information

**Sales**  
sales.titan@hunting-intl.com

**Support**  
support.titan@hunting-intl.com

**Perforating**  
Pampa, TX USA (806) 665-3781  
Milford, TX USA (972) 493-1200  
Calgary, AB CAN (403) 543-4477

**Instruments**  
Pampa, TX USA (806) 665-3781  
Wichita Falls, TX USA (940) 691-1005  
Houston, TX USA (713) 463-5881

**Energetics**  
Milford, TX USA (972) 493-2580

**Distribution**  
Hunting's distribution centers are strategically placed globally. For more information, visit us at: [www.hunting-intl.com/titan](http://www.hunting-intl.com/titan)