

## Coiled Tubing Stripper

### Coiled Tubing Pressure Control Equipment

#### Features

- Side door access
- Compact
- Accepts industry standard packer rubbers

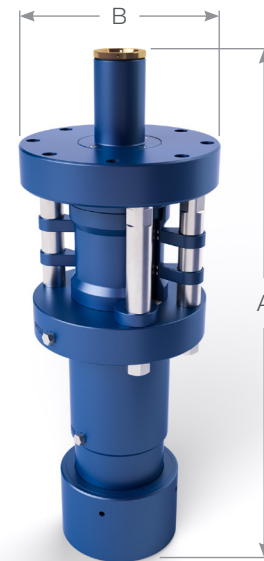
#### Benefits

- Packer rubbers can be changed out with CT in the wellbore
- Ease of use
- Minimise stock of stripper rubber

The Hunting Coiled Tubing Stripper comes with either single or dual independent packers. It is designed to seal around coiled tubing as it is stripped in and out of the well bore at max working pressures of 15,000psi and temperature between -29°C to +121°C. The piston(s) double as a sleeve that can be hydraulically actuated to expose the split packing and anti-extrusion rings, enabling quick redress with coiled tubing in the well.

The Hunting Coiled Tubing Stripper has removable guide sleeves available in a range of lengths to minimise the distance to the injector chains, reducing the chance of the coiled tubing buckling in snubbing conditions.

The Hunting Coiled Tubing stripper has two safety doors that are simply locked in position when closed. In the event of hydraulic failure, the doors will prevent the piston from retracting from the locked position until hydraulic control is regained.



# Coiled Tubing Stripper

## Coiled Tubing Pressure Control Equipment

### Connection Details

Connection Type	Quick Union or API Flange
Coil Size	1.00 to 2-3/8 (per requirement)
Hydraulic Connection Type	NPT
Hydraulic Connection Size (Inches)	1/2
Injection Connection Type	Autoclave
Injection Connection Size (Inches)	9/16

### Dimension: (Ref Sketch)

	Single	Dual
Overall Height (Inches / mm) <b>A</b>	43.3" / 1100	56.4" / 1433
Maximum Diameter (Inches / mm) <b>B</b>	15.0" / 381	
Gross Weight (Pounds / Kg)	635 / 288	948 / 430

### Working Conditions

Maximum Working Pressure (PSI)	15,000
Test Pressure (PSI)	22,500
Hydraulic Working Pressure (PSI)	5,000
Primary Environmental Condition	H2S

### Working Temperatures

Min Operating Temperature (°F / °C)	-20 / -29
Max Operating Temperature (°F / °C)	250 / 121

### Design Criteria

API 6A (Latest Edition)	Yes
NACE MR 01 75 (Latest Edition)	Yes

### Testing Criteria

API 6A (Latest Edition)	Yes
-------------------------	-----

Illustrations (figures) provide a graphical representation of equipment components or screen snapshots for use in identifying parts, or establishing nomenclature, and may or may not be drawn to scale. For component information specific to your rig configuration, see the technical drawings included with your equipment documentation.