

Annular Circulating Sub

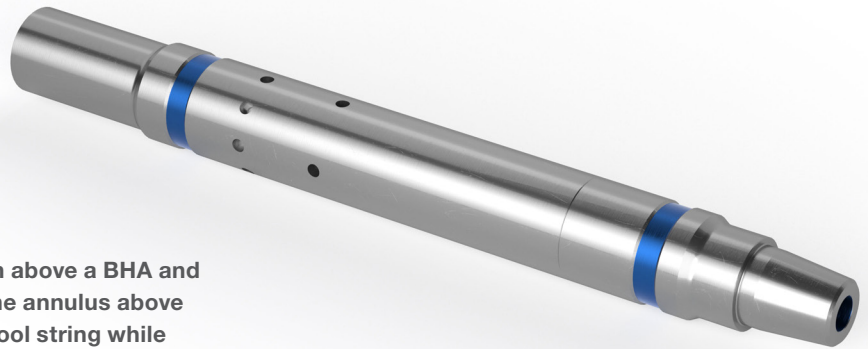
Thru-Tubing Technology | Product Code WT-0604

Features

- Allows circulation above a tool string from the tubing into the annulus
- Equalises pressure across the tool string while running in hole
- Once ball seat is sheared communication between tubing and annulus is isolated in both directions

Benefits

- Field redressable
- Short make up length
- Simple drop ball design to activate



The Hunting Annular circulation sub is run above a BHA and creates a flow path from the tubing into the annulus above so that fluid can be circulated above the tool string while running in hole.

Once a ball is dropped on seat and pressure applied to shear out the ball seat a sleeve moves down, flow to the annulus is isolated and pressure can be applied down the tubing to the BHA.

Ideally suited for the applications below;

- Perforating operations utilizing pressure activated firing heads
- Hydraulic setting tool deployment
- Inflatable packer deployment
- Milling operations

Technical Specifications / Annular Circulating Sub

Tool Size	1-11/16"	2-14/8"
End Connection	1.375"-10 TPI SA	1-1/2" AMMT
Safe Working Load	68,000 lbs	125,000 lbs
Drop Ball Size	3/8"	1/2"
Overall Length	8.4"	9.7"
Working Pressure	10,000 psi	10,000 psi

Other sizes, end connections and materials available on request. SWL based upon 110Ksi material.