

Camco™ 'Z-6' Series Running Tools Slickline Downhole Tools

Camco 'Z-6' running tools are used to install Camco DB series locks and attached subsurface control devices in Camco 4" to 7" No-Go landing nipples with DB profiles.

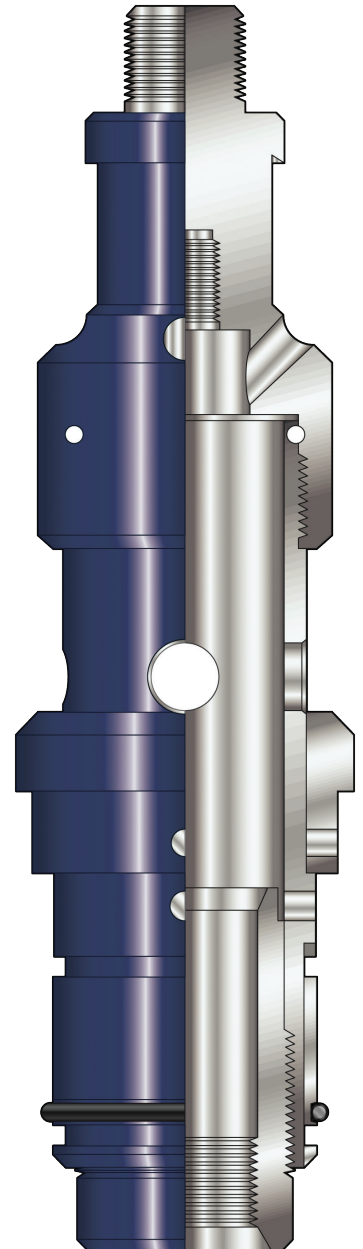
The Z-6 series running tool consists of a fishing neck with a threaded pin connection on the upper end, a plunger, a plunger ring, a lock pin retainer and a garter spring. The lock pin retainer provides a means of keeping the shear pin remnants in the Z-6, which has an internal thread where hollow prongs can be fitted for equalising operations.

The garter spring serves as a 'tell tale' device to provide a positive indication that the lock has been set correctly.

The lock is attached to the Z-6 Running Tool plunger and plunger ring with shear pins. There are two sets of pins on the Z-6, the lower pins are for setting the device and shear during the jarring down process. The upper pins permit an over-pull to be taken to confirm correct

Hunting 'Z-6' Series Running Tools are available with various connections to suit customer requirements

(See charts overleaf)



CAMCO Z-6 SERIES RUNNING TOOLS									
Nominal Size	Type	Assembly Number	Actual Size OD	Connection on Tool	Connection for Prong	Fishing Neck	Pulling Tool to Retrieve	Shear Pin Diameters	Length
3.500"	Z-6	15096	3.000"	1 1/16" 10	3/4" 10	1.750"	15170	5/16"	15.312"
4.000"	Z-6	15098	3.202"	1 9/16" 10	15/16" 10	2.312"	15172	5/16"	14.500"
5.500"	Z-6	15093	4.015"	1 9/16" 10	15/16" 10	2.312"	15172	5/16"	14.031"
7.000"	Z-6	15094	5.312	1 9/16" 10	1 1/2" - 11 LP	2.312"	15172	5/16"	14.750"

Spares components are available. Please specify part and assembly part number or part number if known.