

## Products and Services

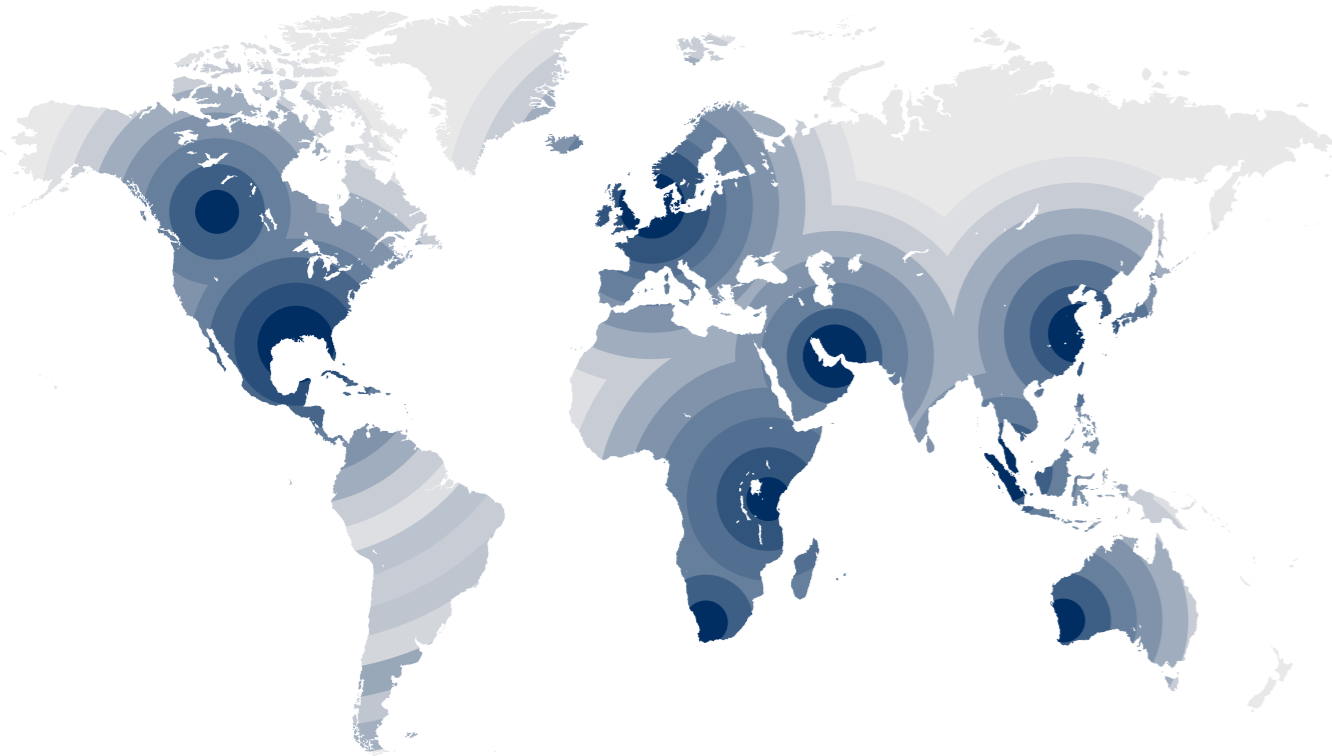
Hunting provides products and services to the world's leading national, international energy companies and oil service companies enabling the extraction of oil and gas. Manufacturing and sales locations are located in the key energy producing regions of the world.

### Proprietary Technology

Hunting owns and develops proprietary patented products with a full range of applications below the wellhead including mud motors, premium connections, well perforating, logging and intervention tools.

### Geographic Footprint

In strategic locations around the world Hunting owns and operates plants, properties and equipment employing people to serve its global customers with local services and products.



## Global Business Units

OCTG and Connection Technology

Perforating Systems

Advanced Manufacturing

Drilling Tools

Intervention Tools

Subsea

## Health, Safety, Environment and Quality Assurance

Hunting is committed to working safely in an environmentally responsible manner. These principles are fully integrated within our Quality Management System that defines the company's global operations.

### Quality Assurance

It is essential that products and services provided by Hunting are designed and manufactured to conform to the agreed API, proprietary licensor, or other specification of the customer, meeting their needs and expectations the first time, every time.

It is the policy of Hunting that only the highest quality products and services, that meet all specification requirements, are provided to customers. Hunting operates a corporate Quality Management System covering all worldwide locations.

### Health, Safety and the Environment

Hunting is committed to achieving and maintaining the highest standards of safety for its employees, customers, suppliers and the public. All Hunting business units consciously operate in a manner that includes environmental matters as an integral part of its business plan.

Hunting's aims are no accidents, no harm to people, and no damage to the environment.

The Hunting goal is "Total Customer Satisfaction".

## Further Information

### Web

[www.huntingplc.com](http://www.huntingplc.com)

### Email

[well.intervention@hunting-intl.com](mailto:well.intervention@hunting-intl.com)  
[well.intervention.asia@hunting-intl.com](mailto:well.intervention.asia@hunting-intl.com)  
[well.intervention.mena@hunting-intl.com](mailto:well.intervention.mena@hunting-intl.com)  
[well.intervention.usa@hunting-intl.com](mailto:well.intervention.usa@hunting-intl.com)

## Global Headquarters

### Americas

**Hunting Energy Services Inc.**  
2 Northpoint Drive, Suite 400  
Houston  
Texas 77060-3236  
USA  
T. +1 281 442 7382

### Europe / Russia / Africa

**Hunting Energy Services Intl.**  
Badentoy Avenue  
Badentoy Industrial Estate  
Portlethen, AB12 4YB  
United Kingdom  
T. +44 (0) 1224 787000

### Middle East

**Hunting Energy Services (WI) Ltd.**  
Building 23, Oilfields Supply Center  
Jebel Ali, P.O. Box 261929  
Dubai  
United Arab Emirates  
T. +971 4 887 6850

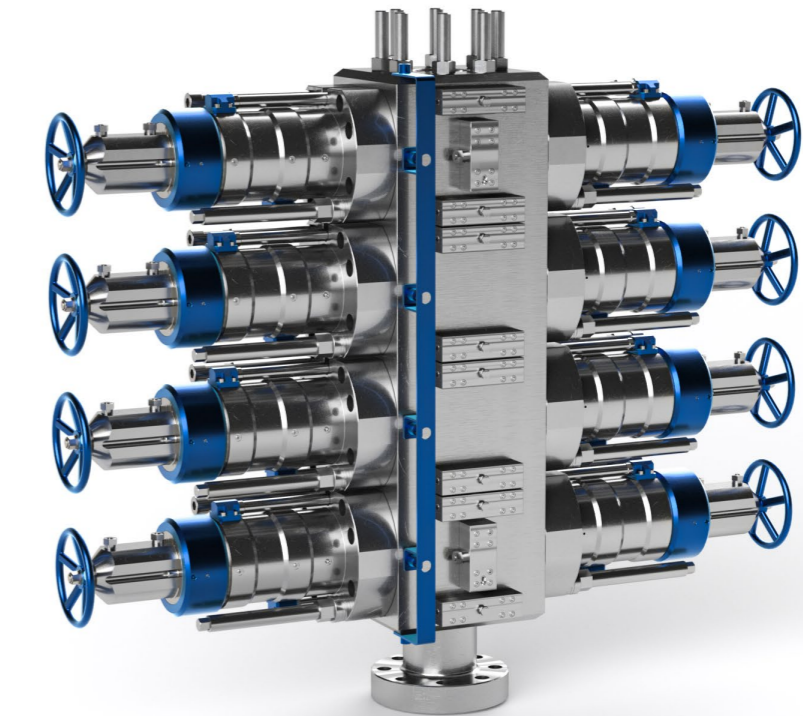
### Asia Pacific

**Hunting Energy Services Pte Ltd.**  
2, International Business Park  
#04-13/14 The Strategy Tower 1  
609930  
Singapore  
T. +65 693 31777



'Excellence in Energy Services for over 100 years'

© Hunting



Coiled Tubing PCE



Introduction  
Products  
Future Development

WI-MPCe-CoiledTubing-V1

# Coiled Tubing Pressure Control Equipment

[www.hunting-intl.com/well-intervention-equipment/pressure-control-equipment](http://www.hunting-intl.com/well-intervention-equipment/pressure-control-equipment)

Hunting's Coiled Tubing PCE is designed, manufactured, and serviced across their global locations and built to the most stringent quality standards to ensure the highest levels of safety and efficiency during well intervention operations.

Products include BOP's, Strippers, In-Situ Pressure Test Subs, Pump-In Subs, Risers and Hunting's Ezi-Shear Seal-Heavy Duty (ESSV-HD) which was specifically developed for coiled tubing operations.

With a proactive approach to the ever-increasing market demand for well-engineering solutions, Hunting provides tools for both sales and rentals as well as design, build, testing and service capabilities.

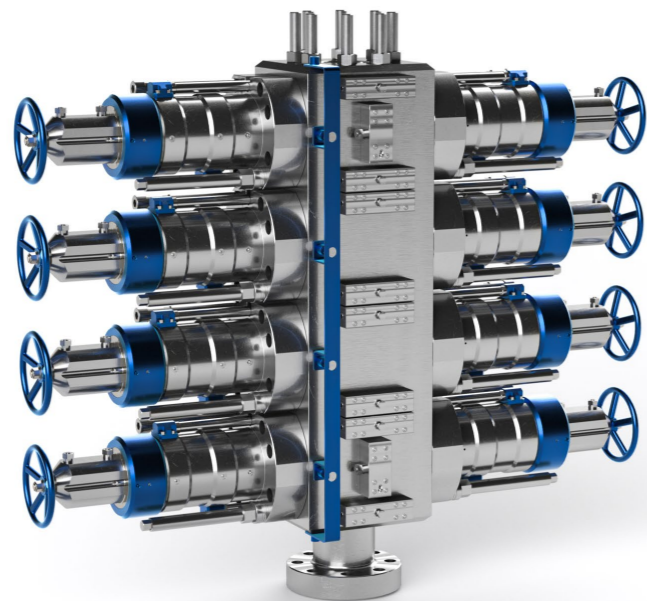
## Coiled Tubing BOP

Hunting's Coiled Tubing BOP provides wellbore isolation, protection against blow-outs and secures the well in an emergency. The balanced piston design system increases shear capabilities.

Hunting's Coiled Tubing BOP has been designed and tested in accordance with AP1 16ST, API 6A, 16A, NORSOK D-001, D-002, D-010 and NACE MR0175.

## Features & Benefits

- Sub 30 second closure time with appropriate hydraulic circuit
- Interchangeable Actuators reducing spares and simplifying maintenance
- Balanced Piston Design negates the effect of well pressure
- Integral Hydraulic Opening System



## Coiled Tubing Stripper ▶

The Hunting Single and Dual Coiled Tubing Strippers are designed to seal around coiled tubing as it is run at max working pressures of 15,000 psi and temperatures between -29C to +121C (-20F to +250F). The piston(s) double as a sleeve that can be hydraulically actuated to expose the split packaging and anti-extrusion rings, enabling redress with coiled tubing in the well.

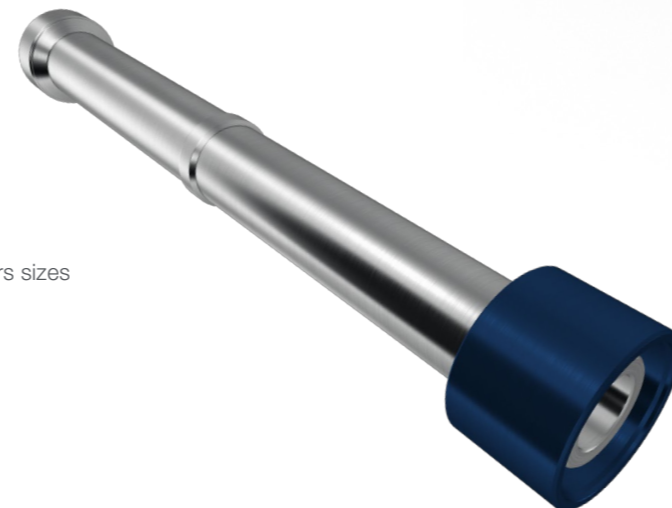
## Features & Benefits

- Side door access
- Compact and ease of use
- Accepts industry standard packer rubbers therefore minimising stock required
- Packer rubbers can be changed out with coiled tubing in the wellbore



## Lubricator ▶

Coiled Tubing Lubricator is typically flanged type and Hunting offers sizes and pressure ratings to fit you well control requirements.



## ◀ Ezi-Shear Seal Valve - HD (ESSV-HD)

The ESSV-HD is second generation shear and seal device offering enhanced capabilities to cut most common sizes, weights and grades of coiled tubing as well as slickline through braided cables.

The compact design allows use below rig decks where a conventional shear seal BOP cannot be placed and creates a second barrier for well control as close as possible to the wellhead.

Independent shear and seal faces improve reliability and closure times of less than 30 seconds which provides assurances in well control performances.

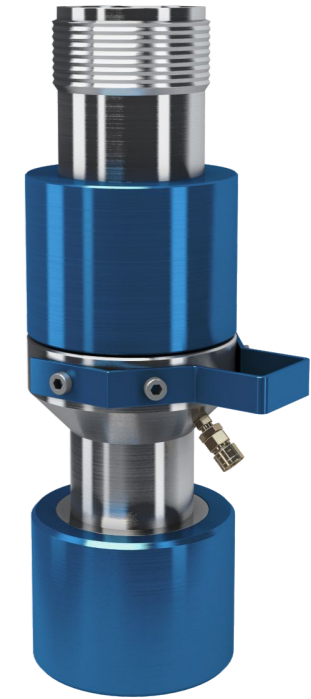
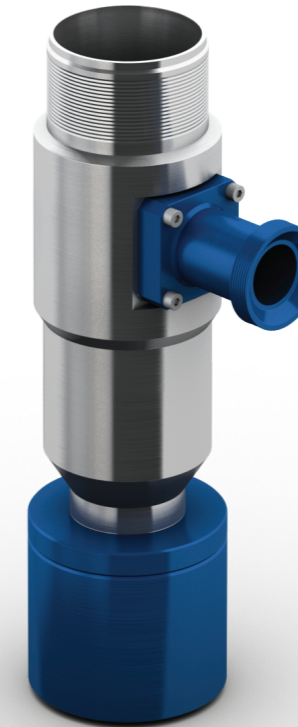
With ratings of 15,000 psi working pressure, - 10C to 105C (14F to 221F) and a bore ID of 5.13", the ESSV-HD is well suited for most any application.

## In-Situ Pressure Test Sub ▶

The In-Situ Pressure Test Sub replaces the lowest bottom connection and becomes the connection broken to change tools. The O-ring seal design with a pressure test port allows a pressure test to be performed using a hand pump without the requirement to retest the entire riser system each time.

## Features & Benefits

- Wide range of flange connections and pressure ratings
- Internal bore sizes from 3.00" to 9.00"
- Significant time savings to pressure test riser when making multiple runs



## ◀ Pump-In Sub

The Pump-In Sub allows for injection of fluids such as PCE filling for a pressure test, draining fluids and chemical injection as required.

The inlet ports are usually 2.00" 1502 Weco type for 10,000 psi below, or 2.00" 2202 Weco type for above 10,000 psi.

## Features & Benefits

- Large bore 2" through bore on side arm
- Effective for large volume hydrostatic testing or pumping high volumes into the well
- Standard industry WECO connections

## Rigging and Support Equipment ▶

Hunting offers companion Lift Clamps and Slings for rigging the PCE string as well as Flanges and crossovers required for complete pressure control package.

